



Manchester Rusk Company Ltd
Flava House
Beta Court
Harper Road
Sharston
Manchester M22 4XR
Tel: 0161 945 3579

SECTION 1: CONTACT DETAILS	
ADDRESS Manchester Rusk Company Ltd Flava House Beta Court Harper Road Sharston Manchester M22 4XR TELEPHONE 0161 945 3579 FAX 0161 946 0299	TECHNICAL CONTACT NAME: Julie Fallows TITLE: Technical Manager SALES CONTACT NAME: Stewart Niven TITLE: Account Manager

SECTION 2: PRODUCT TITLE	
Product Name: Honeyroast Glaze Product code: 15713 Issue Date: 09 April 2010 Reason For Issue: New Format Weight: 2.5kg	Version Number: 01
Physical Properties	
Appearance: Deep orange fine powder. Aroma: Sweet honey with light spice notes. Flavour: Sweet with honey and spice notes.	

SECTION 3: PRODUCT LEGAL DESCRIPTOR
Honeyroast Glaze

SECTION 4: LEGAL REQUIREMENTS	
HEALTH MARK: Not Required	
QUID REQUIREMENTS: No	
COUNTRY OF ORIGIN: UK	
PACK WEIGHT: 2.5kg	AVERAGE WEIGHT: 2.5kg

Document ID	Version No:	Issue Date	Approved By	Page Number
QMS 2.32	06	13/11/09	J. Fallows	Page 1 of 8



Manchester Rusk Company Ltd
 Flava House
 Beta Court
 Harper Road
 Sharston
 Manchester M22 4XR
 Tel: 0161 945 3579

SECTION 5: HAZARD WARNINGS

Contains: Barley, Gluten

This product is made in a factory that also uses Soya, Milk, Egg, Celery, and Mustard, although allergen controls are in place the product may still contain traces of these allergens due to processing constraints

No Nuts, Crustaceans/Molluscs or Fish are used on site

SECTION 6: INGREDIENT DECLARATION

Sugar, Dried Tomato, Salt, Yeast Extract (Yeast Extract, Salt), Dried Onion, Starch, Spices (Cinnamon, Ginger, Clove), Dried Garlic, Citric Acid, Thickener (Guar Gum), Malt Extract (Barley), Flavours (Natural), Colours (Paprika Extract, Curcumin).

Ingredients	% Wt Range	Country of Origin
Sugar	<65%	France
Dried Tomato	<8%	Morocco
Salt	<7%	UK
Yeast Extract (Yeast Extract, Salt)	<5%	Germany
Dried Onion	<4%	Egypt
Starch (Pregelatinised Maize)	<4%	Holland
Spices (Cinnamon, Ginger, Clove)	<1.5%	Cinnamon – Seychelles Ginger – Sierra Leone Clove – Comoro Island
Dried Garlic	<1%	China
Citric Acid	<1%	Ireland
Thickener (Guar Gum)	<1%	India
Malt Extract (Barley)	<1%	UK
Flavours (Natural)	<1%	EU, India, US
Colours (Paprika Extract, Curcumin)	<1%	India
Silicon Dioxide (Processing Aid)	<0.5%	Germany
Additive	E Number	Function in product
Citric Acid	E330	Acid
Guar Gum	E412	Thickener
Paprika Extract	E160c	Colour
Curcumin	E100	Colour
Silicon Dioxide	E551	Processing Aid

Comments:

MRC are members of Valid IT

Document ID	Version No:	Issue Date	Approved By	Page Number
QMS 2.32	06	13/11/09	J. Fallows	Page 2 of 8

F:\apps\admin\toplevel\general documents\tech\newqms09\level 4 working documents

Controlled document if printed on blue paper



Manchester Rusk Company Ltd
 Flava House
 Beta Court
 Harper Road
 Sharston
 Manchester M22 4XR
 Tel: 0161 945 3579

SECTION 7: NUTRITIONAL INFORMATION	
Typical Values per 100g	
Energy (kJ)	1362kJ
Energy (kcal)	326kcal
Protein	3.7g
Carbohydrate	75.8g
of which sugars	65.8g
Fat	0.2g
of which saturates	0.0g
Fibre	2.1g
Salt	8.5g
Sodium	3.4g
Comments: As calculated by Nutricalc	

SECTION 8: SHELF LIFE
AMBIENT: 12 Months
CHILLED: Not applicable
FROZEN: Not applicable

SECTION 9: FREE FROM DATA		
CONTAINS:	PRESENT (Y/N)	COMMENTS
Additives	Yes	Citric Acid E330, Guar Gum E412, Paprika Extract E160c, Curcumin E100, Silicon Dioxide E551.
Preservatives	No	
Artificial Preservatives	No	
Natural Colours	Yes	Paprika Extract E160c, Curcumin E100
Artificial Colours	No	
MSG	No	
BHT/BHA	No	
Sweeteners	No	

Document ID	Version No:	Issue Date	Approved By	Page Number
QMS 2.32	06	13/11/09	J. Fallows	Page 3 of 8

F:\apps\admin\toplevel\general documents\tech\newqms09\level 4 working documents

Controlled document if printed on blue paper



Manchester Rusk Company Ltd
 Flava House
 Beta Court
 Harper Road
 Sharston
 Manchester M22 4XR
 Tel: 0161 945 3579

Hydrolysed Vegetable Protein	No	Malt Extract Starch	
Wheat & Wheat Derivatives	No		
Rye/Oats/Barley/Spelt/Kamut	Yes		
Maize & Maize Derivatives	Yes		
Soya & Soya Derivatives	No		
Genetically Modified Ingredients	No		
Nuts & Peanuts	No		
Nut & Peanut Derivatives excl. Oil	No		
Nut & Peanut Oil	No		
Sesame Seeds	No		
Seed Derivatives excl. Oil	No		
Seed Oil	No		
Pine Nuts / Kernels	No		
Yeast	Yes		Yeast Extract
Mustard / Mustard Seeds / Mustard Derivatives	No		
Celery / Celeriac	No		
Kiwi Fruit	No		
Milk and Milk Derivatives	No		
Molluscs	No		
Lupin	No		
Animal Products: Dairy	No		
Animal Products: Eggs	No		
Animal Products: Shellfish	No		
Animal Products: Fish (Other)	No		
Animal Products: Beef & Derivatives	No		
Animal Products: Pork	No		
Animal Products: Lamb	No		
Animal products: Poultry	No		
Animal products: Other	No		

SUITABLE FOR:

Vegetarians	Yes	Gluten – Malt Extract
Vegans	Yes	
Coeliacs	No	
Lactose Intolerant	Yes	

Document ID	Version No:	Issue Date	Approved By	Page Number
QMS 2.32	06	13/11/09	J. Fallows	Page 4 of 8

F:\apps\admin\toplevel\general documents\tech\newqms09\level 4 working documents

Controlled document if printed on blue paper



Manchester Rusk Company Ltd
 Flava House
 Beta Court
 Harper Road
 Sharston
 Manchester M22 4XR
 Tel: 0161 945 3579

SECTION 10: MICROBIOLOGICAL STANDARDS

TEST	MAXIMUM
TVC	< 100,000 cfu/g
YEAST & MOULDS	< 1000 cfu/g
ENTEROBACTERIACEAE	< 100 cfu/g
ESHERICHIA COLI	< 10 cfu/g
SALMONELLA	Absent in 25g
STAPH AUREUS	< 20 cfu/g
BACILLIUS CEREUS	< 100 cfu/g

SECTION 11: DIRECTIONS FOR USE

Use at 8-10% to Meat.

SECTION 12: STORAGE INSTRUCTIONS

Ambient storage in a cool, dry place in the packaging specified

SECTION 13: ANALYTICAL DATA

Nitrate content:	<1PPM
Taste Test	As Specification Parameters
Appearance & Odour	As Specification Parameters
Sieve Test	Sieve intact

SECTION 14: QUALITY PARAMETERS

PARAMETER	MIN	MAX
Batch ingredient weights	As per batching record	NA
Sensory Analysis	Per batch	NA

Document ID	Version No:	Issue Date	Approved By	Page Number
QMS 2.32	06	13/11/09	J. Fallows	Page 5 of 8

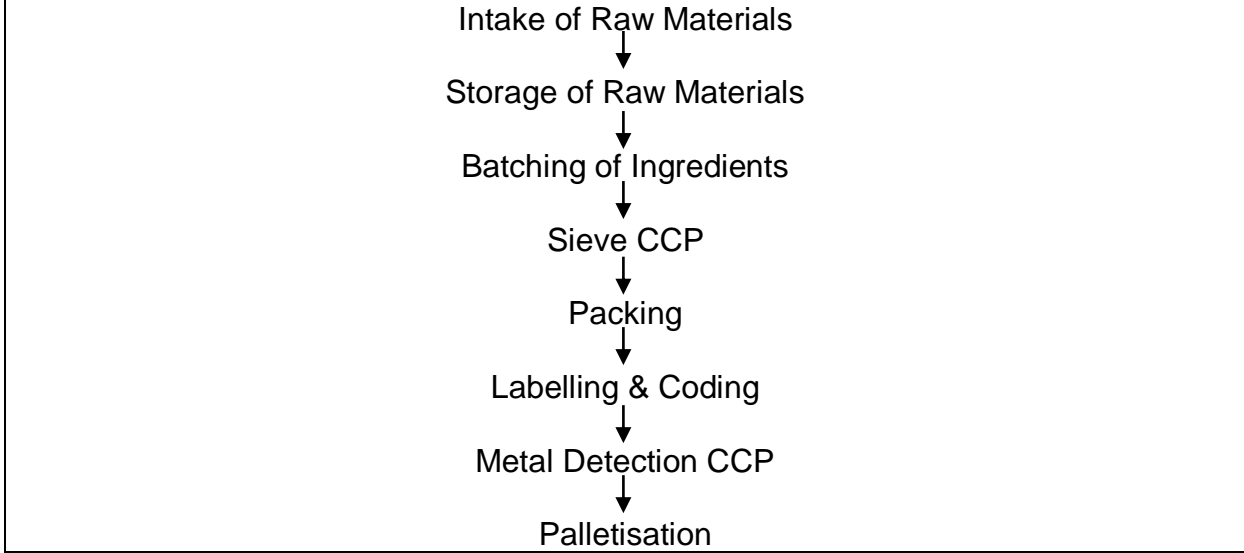
F:\apps\admin\toplevel\general documents\tech\newqms09\level 4 working documents

Controlled document if printed on blue paper



Manchester Rusk Company Ltd
 Flava House
 Beta Court
 Harper Road
 Sharston
 Manchester M22 4XR
 Tel: 0161 945 3579

SECTION 15: PROCESS FLOW



SECTION 16: QUALITY CHECKS

CHECK	FREQUENCY	PARAMETERS
Weights	Per Tub	Per Tub
Coding	Start of run & every 30 minutes	Clear, legible, correct
Seal	Start of run & every 30 minutes	Intact & clean
Metal Detection	Start and end of run	1.5mm Fe, 2.0mm Non Fe, 2.5mm SS

SECTION 16: PACKAGING STANDARDS

Inner Packaging Description: Clear sealed polythene laminate or Blue Food Grade Plastic Bag.

Inner Barcode: Not applicable

Outer Packaging Description: 2.5kg High density polyethylene tub with low density lid.

Outer Barcode: Not applicable

Coding Details:

(day) (month) (year) (batch)

(Day) is denoted by the first 2 numbers

(Month) is denoted by the second 2 numbers

(Year) is denoted by the last number of year

(Batch) is denoted by the number of the actual batch on the production day

Document ID	Version No:	Issue Date	Approved By	Page Number
QMS 2.32	06	13/11/09	J. Fallows	Page 6 of 8



Manchester Rusk Company Ltd
 Flava House
 Beta Court
 Harper Road
 Sharston
 Manchester M22 4XR
 Tel: 0161 945 3579

<p>Pallet Details: Wooden Pallet</p> <p>Cases Per Layer: 8 x 2.5kg x 9 Boxes per layer</p> <p>Layers Per Pallet: 3</p> <p>Cases Per Pallet: 27</p>
--

SECTION 17: HEALTH AND SAFETY DATA	
PRODUCT DIGESTED	This product is designed for human consumption, and is safe when used at recommended levels. In the case of excessive ingestion, give patient water to drink and rest. If discomfort persists, seek medical advice
SKIN CONTACT	Normal standard of hygiene and regular washing with water should prevent irritation; avoid prolonged contact with lips and tender parts of the body. Medical attention should be obtained in cases of sensitisation
EYE CONTACT	Avoid contact with eyes. Irrigate immediately with water and seek medical advice if discomfort persists
PRODUCT INHALED	Dust masks should be worn if the product is found to be irritating. In the case of inhalation remove casualty from exposure, rest and keep warm. In severe cases seek medical attention.
SPILLAGE	Sweep up and dispose of with non-hazardous wastes. Small spillages may be washed to drain with cold water. Consult local authorities when disposing of large quantities.
FIRE	Avoid production of dust. Fires should be controlled by water spray, rather than by main jets, to avoid generating explosive dust clouds.
STORAGE PRECAUTIONS	Original sealed containers should be stored in a cool dry place
HANDLING PRECAUTIONS	All MRC products should be used in a well-ventilated area. Operators should observe normal good house keeping precautions. Goggles, gloves and dust masks may be required when exposed to prolonged handling

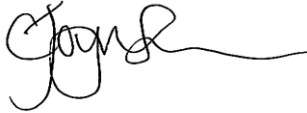
Document ID	Version No:	Issue Date	Approved By	Page Number
QMS 2.32	06	13/11/09	J. Fallows	Page 7 of 8

F:\apps\admin\toplevel\general documents\tech\newqms09\level 4 working documents

Controlled document if printed on blue paper



Manchester Rusk Company Ltd
 Flava House
 Beta Court
 Harper Road
 Sharston
 Manchester M22 4XR
 Tel: 0161 945 3579

SECTION 19: APPROVAL	
FOR MRC	FOR CUSTOMER
<p>Signed: </p> <p>Position: QA Supervisor</p> <p>Date: 09/04/10</p>	<p>Signed</p> <p>Position</p> <p>Date</p>

The contents of this specification are the sole property of Manchester Rusk Company Ltd, prior written confirmation must be obtained from Manchester Rusk Company Ltd before any information contained within the specification is supplied to a 3rd party.

If a signed copy of the specification is not returned within 6 weeks of the date of the specification, Manchester Rusk Company Ltd will assume implicit acceptance of the specification and its contents.

SECTION 20: LIST OF AMENDMENTS			
DATE	ISSUE No	REASON FOR ISSUE	APPROVED BY
09/04/10	1	New Format	C. Joyson

Document ID	Version No:	Issue Date	Approved By	Page Number
QMS 2.32	06	13/11/09	J. Fallows	Page 8 of 8

F:\apps\admin\toplevel\general documents\tech\newqms09\level 4 working documents

Controlled document if printed on blue paper